

Fase<sup>1</sup>

# ARCHITECTURAL PROFILES

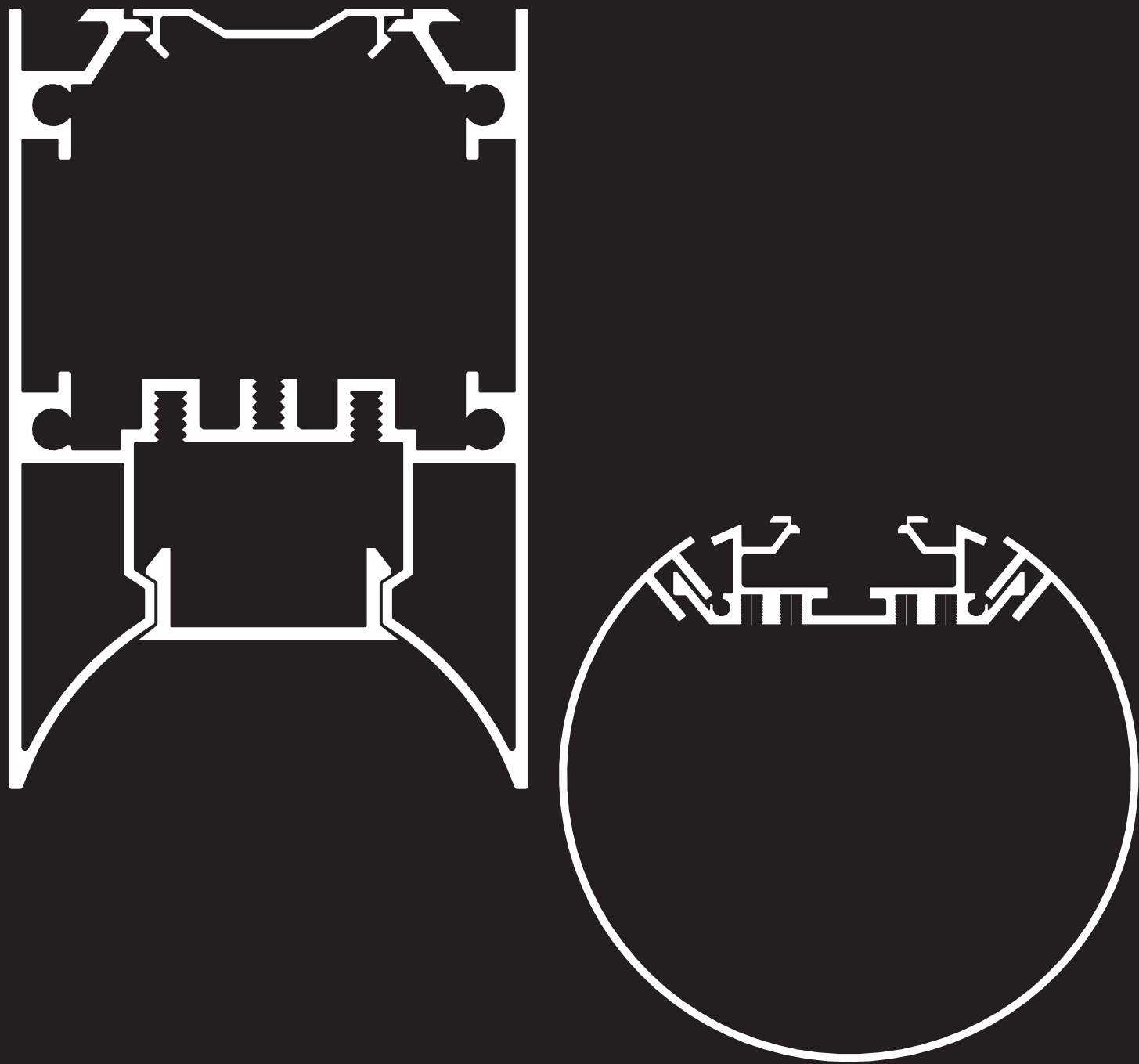


# CONSTRUCT MAST ROUTE MUCCI ARCHITECTURAL PROFILES

The Architectural Profiles are UL Listed to ensure safe operation for many years to come. We want to ensure your success with every project you tackle. We're also offering a 5 year limited warranty.







# ARCHITECTURAL PROFILES

Introducing

## ARCHITECTURAL PROFILES

Linear lighting comprised of the finest LED components are fully assembled in our facility in Canada. These durable LED lights are built to last. The flat circuit boards will illuminate any space whether on a small- or large-scale capacity. With endless possibilities of shapes and colors, these LED extrusions are the newest stars of lighting.



# DESIGN

Create breathtaking designs with our fully functional LED Architectural Profiles, infinitely customizable.

Our Architectural Profiles are built to last, and fast circuit boards produce enough light to illuminate any space, whether it's a small or large scale capacity, it comes with Samsung LED circuit boards and a selection of industry leading drivers to choose from.

With endless possibility of shapes and colors, these Architectural Profiles are strong trends in the lighting industry.

# BUILT



- A** PENDANT (6.5ft. of Wire & Aircraft cable)
- B** END CAP
- C** END CAP SCREWS
- D** EXTRUDED ALUMINUM HEAT SINK
- E** A/C POWER CABLE

- F** ALUMINUM EXTRUDED PROFILE
- G** LED DRIVER
- H** LED BOARD
- I** POLYCARBONATE DIFFUSER







# MOUNT CHOICE

SURFACE MOUNT

TRIM RECESSED

SUSPENSION

WALL MOUNT





# LIGHT CHOICE

Each Architectural Profile sports an aluminum body that makes this versatile collection extremely durable. Its housing design with proprietary hidden heat sink mechanism protects LED life for longevity as it increases the heat flow away by absorbing thermal energy and then dispersing it into the surrounding ambient air.



The F38 series is our narrowest Architectural Profile sports an aluminum body at a width of 38mm. Ideal for commercial & residential spaces

ARCHITECTURAL PROFILE SERIES:

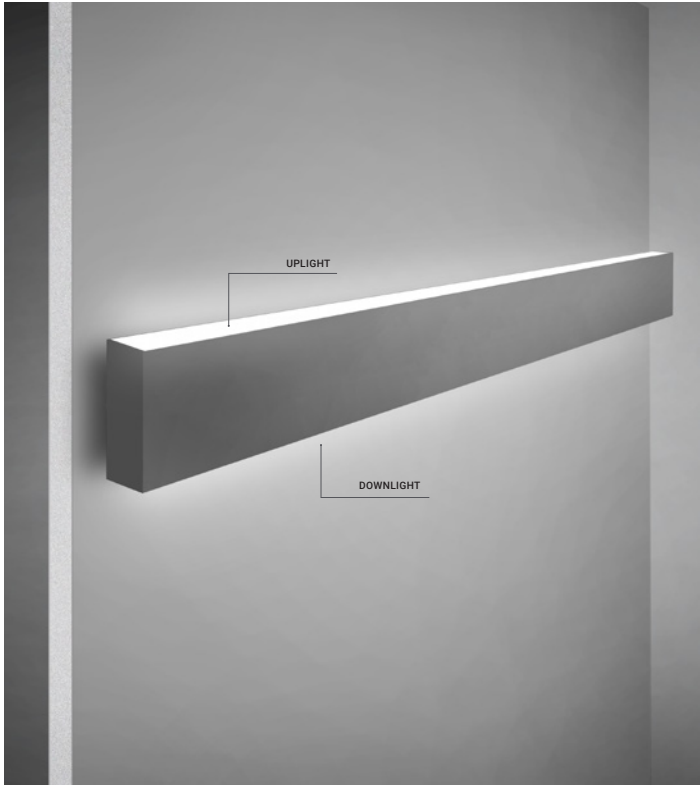
# F38



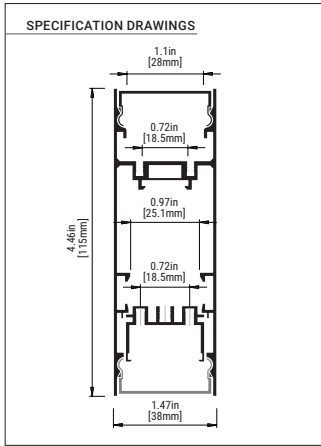
SHOWN: F38 SUSPENSION ARCHITECTURAL PROFILE



F38 WALL MOUNT



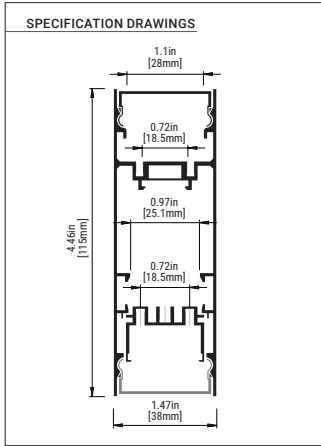
MODEL F38	36112-012
DIMENSION	38mm x 115mm
MOUNTING	Wall Mount
KELVIN	2700K*/3000K/3500K/4000K*/5000K*
LENGTHS	6" – 8'/Continuous Run*
LENS	Opal
LIGHT DIRECTION	Up & Downlight
LUMEN PACKAGES	<b>Standard</b> 135LM/W@3500K / <b>High</b> 150LM/W@3500K*
VOLTAGE	120V-277V/347V*
DIMMING	0-10V/TRIAC/Tuneable White*/Lutron*/Dim To Warm*
FINISHES	Black/White/Aluminum/Customization* (Require RAL#)



F38 SUSPENSION



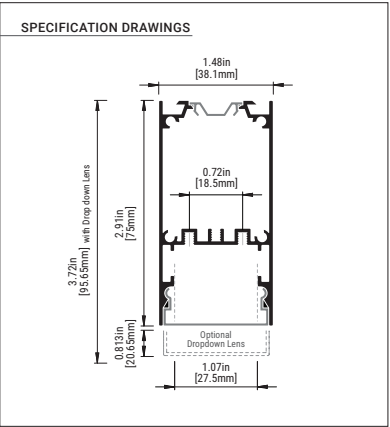
MODEL F38	36112-012
DIMENSION	38mm x 115mm
MOUNTING	Suspension Mount
KELVIN	2700K*/3000K/3500K/4000K*/5000K*
LENGTHS	6" – 8'/Continuous Run*
LENS	Opal
LIGHT DIRECTION	Up & Downlight
LUMEN PACKAGES	<b>Standard</b> 135LM/W@3500K / <b>High</b> 150LM/W@3500K*
VOLTAGE	120V-277V/347V*
DIMMING	0-10V/TRIAC/Tuneable White*/Lutron*/Dim To Warm*
FINISHES	Black/White/Aluminum/Customization* (Require RAL#)



F38 SUSPENSION



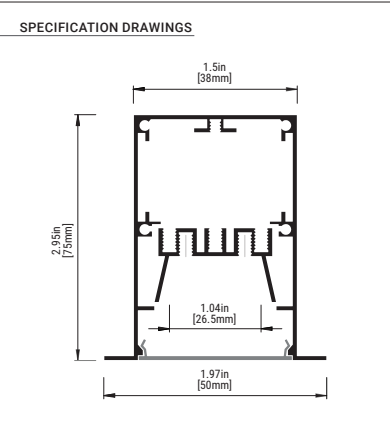
MODEL F38	36053-018
DIMENSION	38mm x 75mm
MOUNTING	Suspension Mount
KELVIN	2700K*/3000K/3500K/4000K*/5000K*
LENGTH	6" – 8'/Continuous Run*
LENS	Opal/Opal Dropped
LIGHT DIRECTION	Downlight
LUMEN PACKAGE	<b>Standard</b> 135LM/W@3500K / <b>High</b> 150LM/W@3500K*
VOLTAGE	120V-277V/347V*
DIMMING	0-10V/TRIAC/Tuneable White*/Lutron*/Dim To Warm*
FINISHES	Black/White/Aluminum/Customization* (Require RAL#)



F38 RECESSED

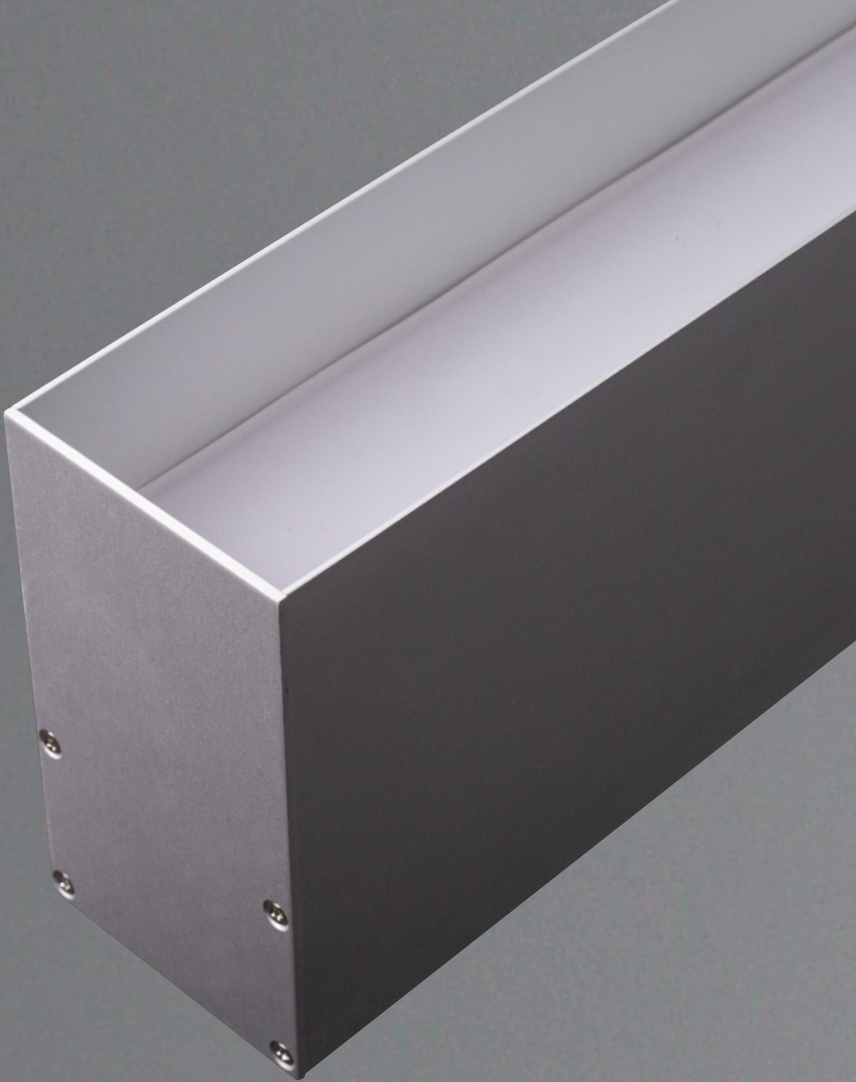


MODEL F38	37641-016
SIZE	38mm
MOUNTING	Recessed Mount
KELVIN	2700K*/3000K/3500K/4000K*/5000K*
LENGTH	6" – 8'/Continuous Run*
LENS	Opal
LIGHT DIRECTION	Downlight
LUMEN PACKAGE	<b>Standard</b> 135LM/W@3500K / <b>High</b> 150LM/W@3500K*
VOLTAGE	120V-277V/347V*
DIMMING	0-10V/TRIAC/Tuneable White*/Lutron*/Dim To Warm*
FINISHES	Black/White/Aluminum/Customization* (Require RAL#)





The F50 series is our narrow Architectural Profile sports an aluminum body at 50mm wide. Ideal for commercial & residential spaces.



ARCHITECTURAL PROFILE SERIES:

# F50



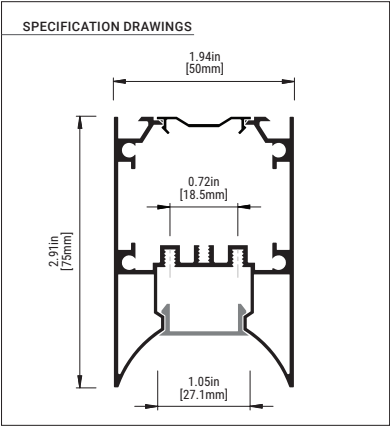
SHOWN: F50 SUSPENSION MOUNT ARCHITECTURAL PROFILE



F50 SUSPENSION



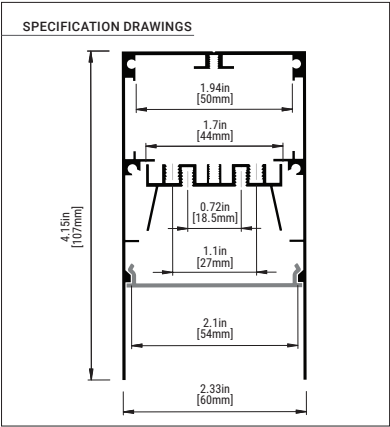
MODEL F50	36104-017
DIMENSION	50mm x 75mm
MOUNTING	Suspension Mount
STYLE	Regressed Arch
KELVIN	2700K*/3000K/3500K/4000K*/5000K*
LENGTH	6" – 8'/Continuous Run*
LENS	Opal
LIGHT DIRECTION	Downlight
LUMEN PACKAGE	<b>Standard</b> 135LM/W@3500K / <b>High</b> 150LM/W@3500K*
VOLTAGE	120V-277V/347V*
DIMMING	0-10V/TRIAC/Tuneable White*/Lutron*/Dim To Warm*
FINISHES	Black/White/Aluminum/Customization* (Require RAL#)



F50 SUSPENSION



MODEL F50	36134-014
DIMENSION	50mm x 107mm
MOUNTING	Suspension Mount
STYLE	Regressed Anti-Glare
KELVIN	2700K*/3000K/3500K/4000K*/5000K*
LENGTH	6" – 8'/Continuous Run*
LENS	Opal
LIGHT DIRECTION	Downlight
LUMEN PACKAGE	<b>Standard</b> 135LM/W@3500K / <b>High</b> 150LM/W@3500K*
VOLTAGE	120V-277V/347V*
DIMMING	0-10V/TRIAC/Tuneable White*/Lutron*/Dim To Warm*
FINISHES	Black/White/Aluminum/Customization* (Require RAL#)

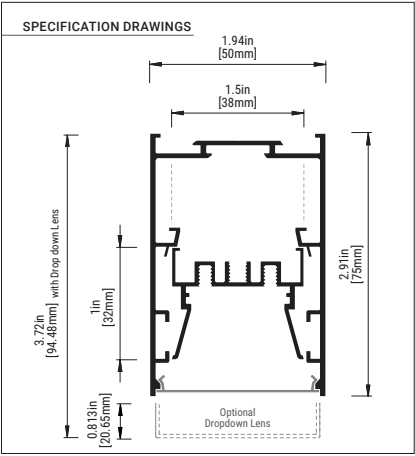


\*PLEASE CONSULT FACTORY

F50 SUSPENSION



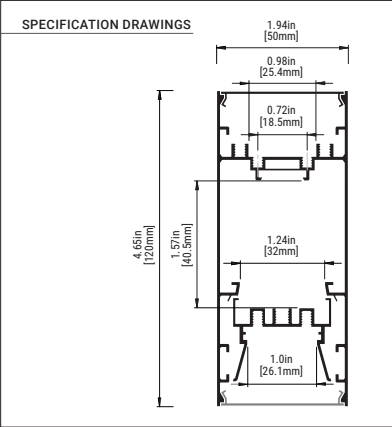
MODEL F50	36070-015
DIMENSION	50mm x 75mm
MOUNTING	Suspension Mount
KELVIN	2700K*/3000K/3500K/4000K*/5000K*
LENGTH	6" – 8'/Continuous Run*
LENS	Opal/Opal Dropped
LIGHT DIRECTION	Downlight
LUMEN PACKAGE	<b>Standard</b> 135LM/W@3500K / <b>High</b> 150LM/W@3500K*
VOLTAGE	120V-277V/347V*
DIMMING	0-10V/TRIAC/Tuneable White*/Lutron*/Dim To Warm*
FINISHES	Black/White/Aluminum/Customization* (Require RAL#)



F50 SUSPENSION



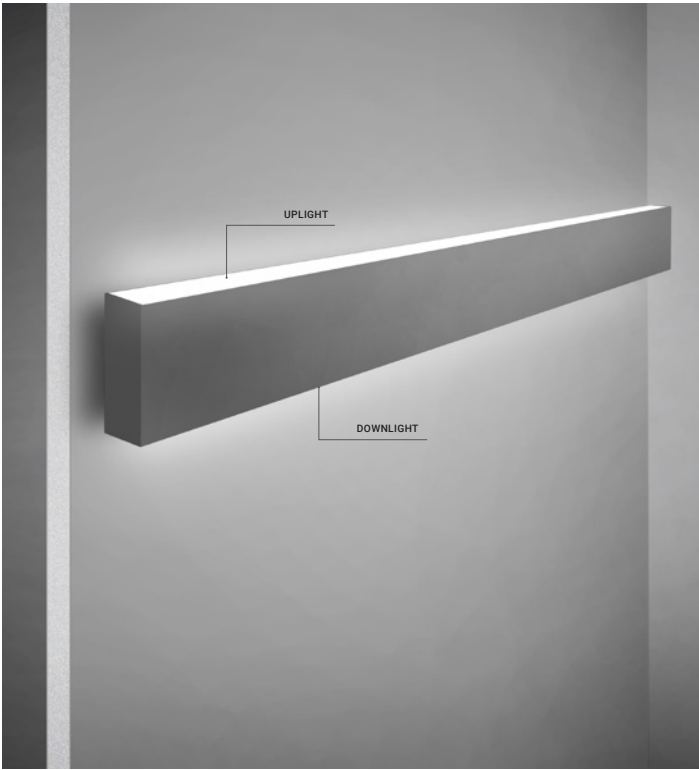
MODEL F50	36121-014
DIMENSION	50mm x 120mm
MOUNTING	Suspension Mount
KELVIN	2700K*/3000K/3500K/4000K*/5000K*
LENGTH	6" – 8'/Continuous Run*
LENS	Opal
LIGHT DIRECTION	Up & Downlight
LUMEN PACKAGE	<b>Standard</b> 135LM/W@3500K / <b>High</b> 150LM/W@3500K*
VOLTAGE	120V-277V/347V*
DIMMING	0-10V/TRIAC/Tuneable White*/Lutron*/Dim To Warm*
FINISHES	Black/White/Aluminum/Customization* (Require RAL#)



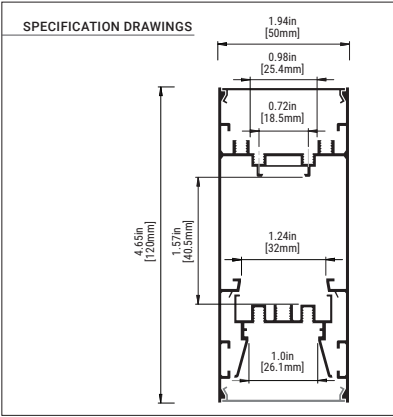
\*PLEASE CONSULT FACTORY



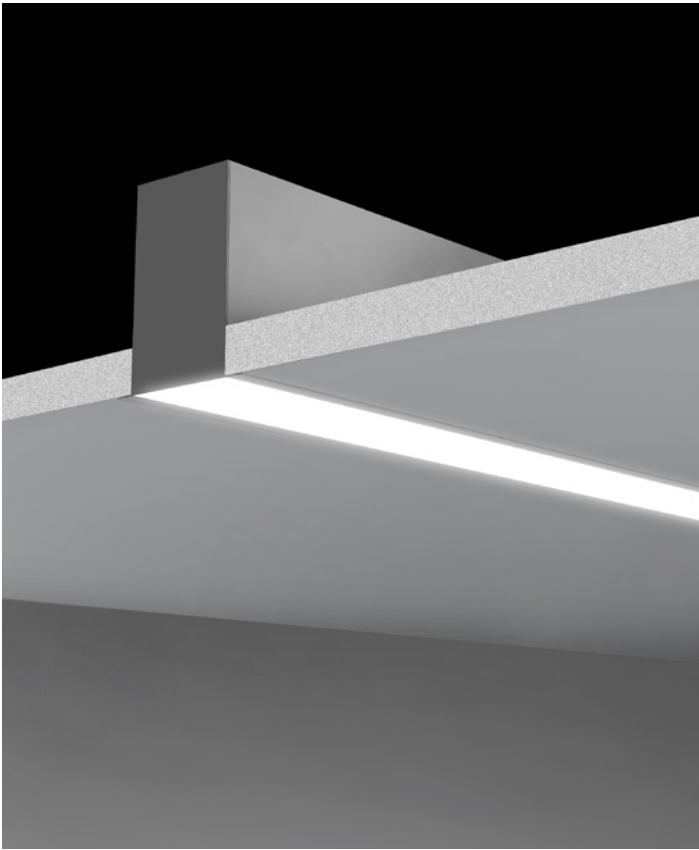
F50 WALL MOUNT



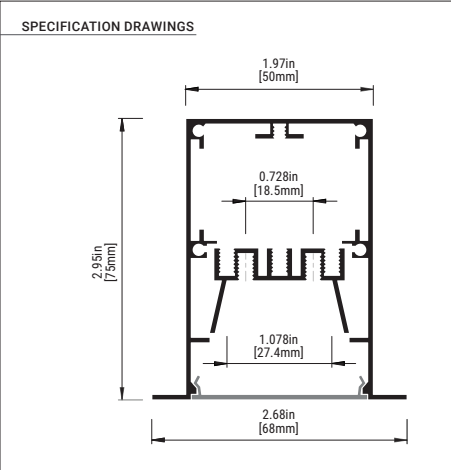
MODEL F50	36121-014
DIMENSION	50mm x 120mm
MOUNTING	Wall Mount
KELVIN	2700K*/3000K/3500K/4000K*/5000K*
LENGTH	6" – 8"/Continuous Run*
LENS	Opal
LIGHT DIRECTION	Up & Downlight
LUMEN PACKAGE	<b>Standard</b> 135LM/W@3500K / <b>High</b> 150LM/W@3500K*
VOLTAGE	120V-277V/347V*
DIMMING	0-10V/TRIAC/Tuneable White*/Lutron*/Dim To Warm*
FINISHES	Black/White/Aluminum/Customization* (Require RAL#)



F50 RECESSED



MODEL F50	36081-011
DIMENSION	50mm x 75mm
MOUNTING	Recessed Mount
KELVIN	2700K*/3000K/3500K/4000K*/5000K*
LENGTH	6" – 8"/Continuous Run*
LENS	Opal
LIGHT DIRECTION	Downlight
LUMEN PACKAGE	<b>Standard</b> 135LM/W@3500K / <b>High</b> 150LM/W@3500K*
VOLTAGE	120V-277V/347V*
DIMMING	0-10V/TRIAC/Tuneable White*/Lutron*/Dim To Warm*
FINISHES	Black/White/Aluminum/Customization* (Require RAL#)



\*PLEASE CONSULT FACTORY



SHOWN: F50 RECESSED ARCHITECTURAL PROFILE



The F75 series is our wide Architectural Profile sports an aluminum body at 75mm wide. Ideal for commercial & residential spaces.

ARCHITECTURAL PROFILE SERIES:

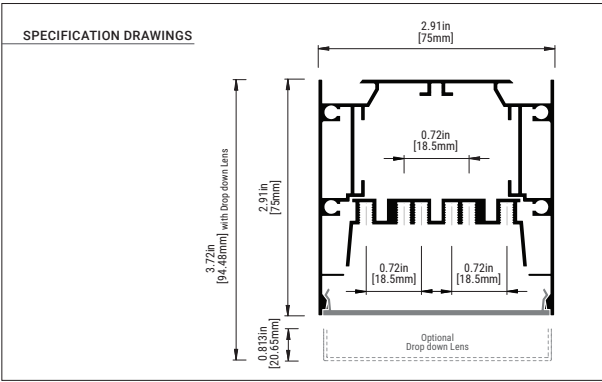
# F75



F75 SUSPENSION



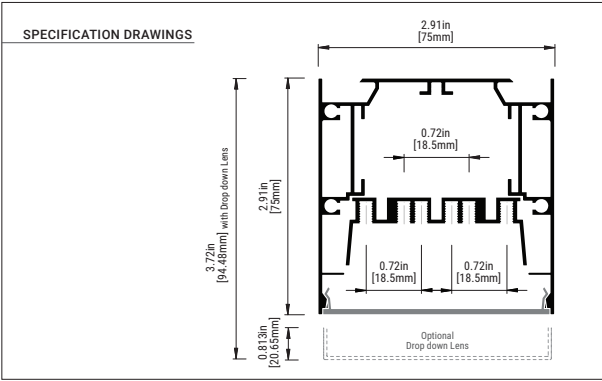
MODEL F75	36087-013
DIMENSION	75mm
MOUNTING	Suspension Mount
KELVIN	2700K*/3000K/3500K/4000K*/5000K*
LENGTH	6" – 8'/Continuous Run*
LENS	Opal/Opal Dropped
LIGHT DIRECTION	Downlight
LUMEN PACKAGE	<b>Standard</b> 135LM/W@3500K / <b>High</b> 150LM/W@3500K*
VOLTAGE	120V-277V/347V*
DIMMING	0-10V/TRIAC/Tuneable White*/Lutron*/Dim To Warm*
FINISHES	Black/White/Aluminum/Customization* (Require RAL#)



F75 SURFACE MOUNT



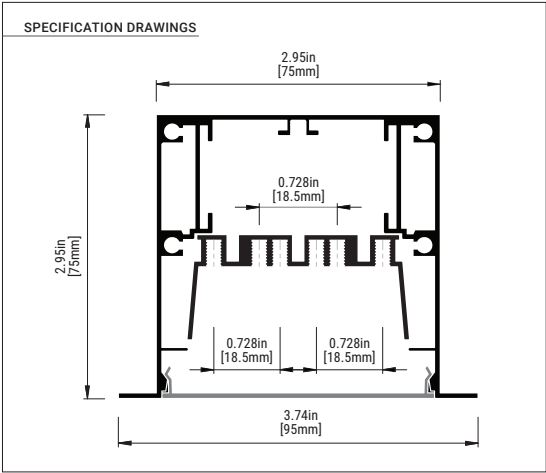
MODEL F75	36087-013
DIMENSION	75mm
MOUNTING	Surface Mount
KELVIN	2700K*/3000K/3500K/4000K*/5000K*
LENGTH	6" – 8'/Continuous Run*
LENS	Opal/Opal Dropped
LIGHT DIRECTION	Downlight
LUMEN PACKAGE	<b>Standard</b> 135LM/W@3500K / <b>High</b> 150LM/W@3500K*
VOLTAGE	120V-277V/347V*
DIMMING	0-10V/TRIAC/Tuneable White*/Lutron*/Dim To Warm*
FINISHES	Black/White/Aluminum/Customization* (Require RAL#)



F75 RECESSED



MODEL F75	36098-019
DIMENSION	75mm
MOUNTING	Recessed Mount
KELVIN	2700K*/3000K/3500K/4000K*/5000K*
LENGTH	6" – 8'/Continuous Run*
LENS	Opal
LIGHT DIRECTION	Downlight
LUMEN PACKAGE	<b>Standard</b> 135LM/W@3500K / <b>High</b> 150LM/W@3500K*
VOLTAGE	120V-277V/347V*
DIMMING	0-10V/TRIAC/Tuneable White*/Lutron*/Dim To Warm*
FINISHES	Black/White/Aluminum/Customization* (Require RAL#)

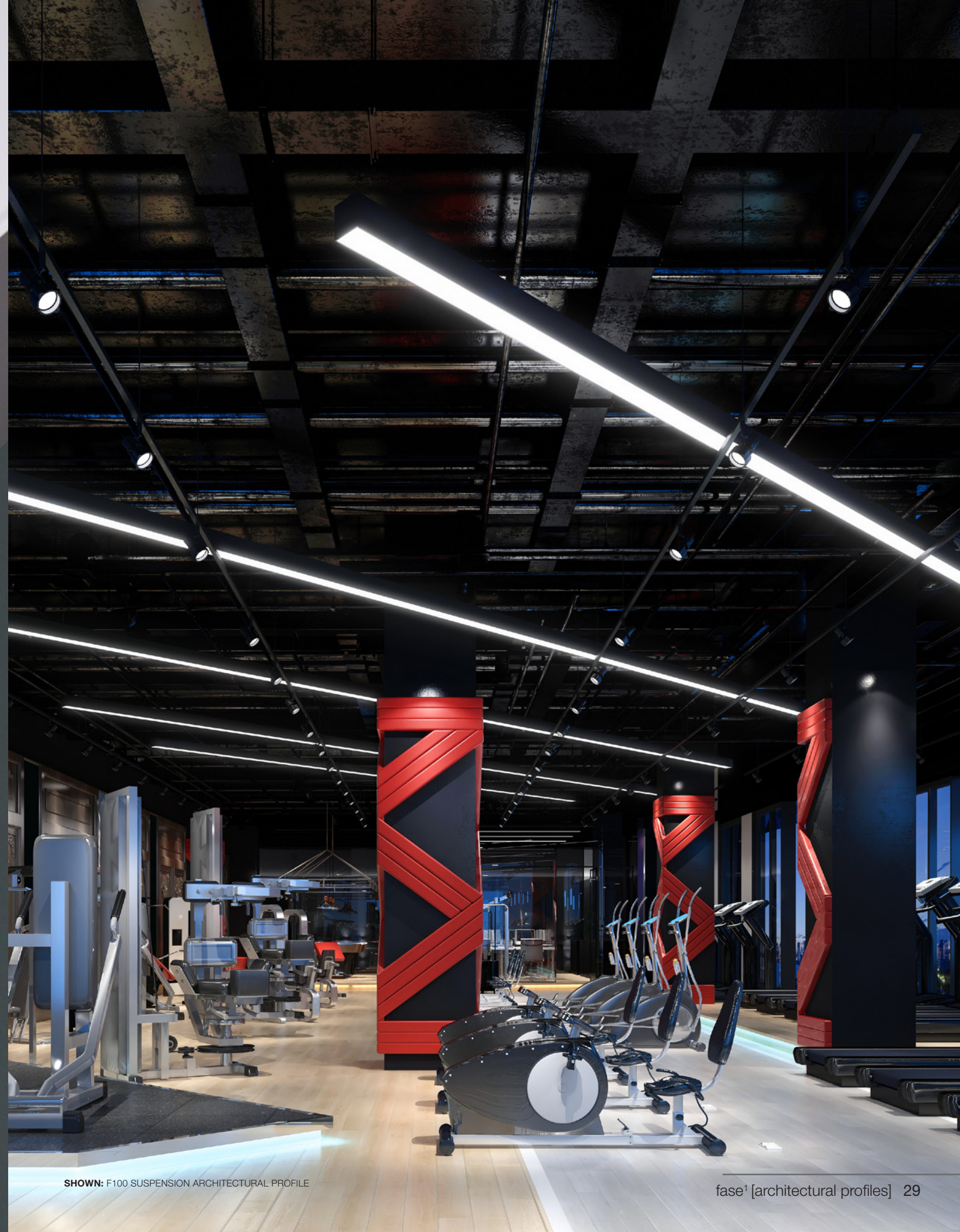




The F100 series is our widest Architectural Profile sports an aluminum body at a width of 100mm. Ideal for commercial & residential spaces

ARCHITECTURAL PROFILE SERIES:

# F100



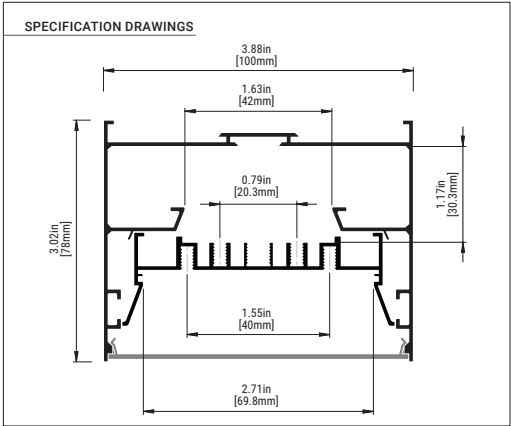
SHOWN: F100 SUSPENSION ARCHITECTURAL PROFILE



F100 SUSPENSION



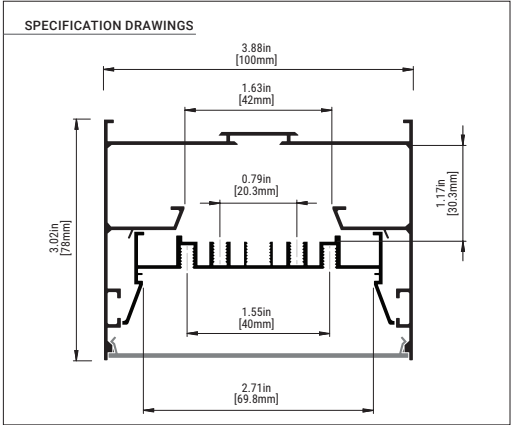
MODEL F100	36139-019
DIMENSION	100mm
MOUNTING	Suspension Mount
KELVIN	2700K*/3000K/3500K/4000K*/5000K*
LENGTH	6" – 8'/Continuous Run*
LENS	Opal
LIGHT DIRECTION	Downlight
LUMEN PACKAGE	<b>Standard</b> 135LM/W@3500K / <b>High</b> 150LM/W@3500K*
VOLTAGE	120V-277V/347V*
DIMMING	0-10V/TRIAC/Tuneable White*/Lutron*/Dim To Warm*
FINISHES	Black/White/Aluminum/Customization* (Require RAL#)



F100 SURFACE MOUNT



MODEL F100	36139-019
DIMENSION	100mm
MOUNTING	Surface Mount
KELVIN	2700K*/3000K/3500K/4000K*/5000K*
LENGTH	6" – 8'/Continuous Run*
LENS	Opal
LIGHT DIRECTION	Downlight
LUMEN PACKAGE	<b>Standard</b> 135LM/W@3500K / <b>High</b> 150LM/W@3500K*
VOLTAGE	120V-277V/347V*
DIMMING	0-10V/TRIAC/Tuneable White*/Lutron*/Dim To Warm*
FINISHES	Black/White/Aluminum/Customization* (Require RAL#)



\*PLEASE CONSULT FACTORY



SHOWN: F100 SUSPENSION ARCHITECTURAL PROFILE



# TECHNICAL SPECS

### DRIVER OPTIONS

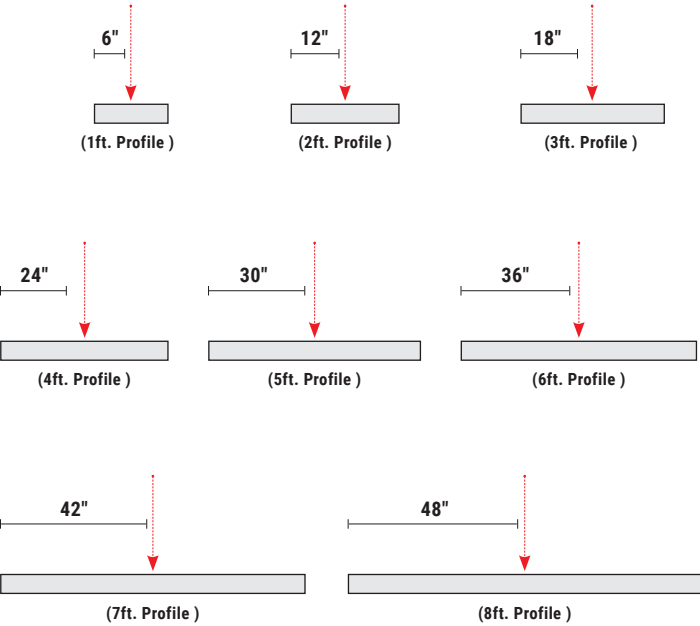
OS1	1% Dimming (0-10V)
TRI	TRIAC Dimmable LED Driver
TW	Tuneable White (1500K-6500K)
HL1	Lutron HI-LUME 1% 2-wire LED Driver
ES	Lutron Digital Ecosystem
5ES	5 Series Ecosystem; 5% Dimming
DTW	Dim To Warm

### SAMSUNG BOARD TECHNICAL SPECIFICATION

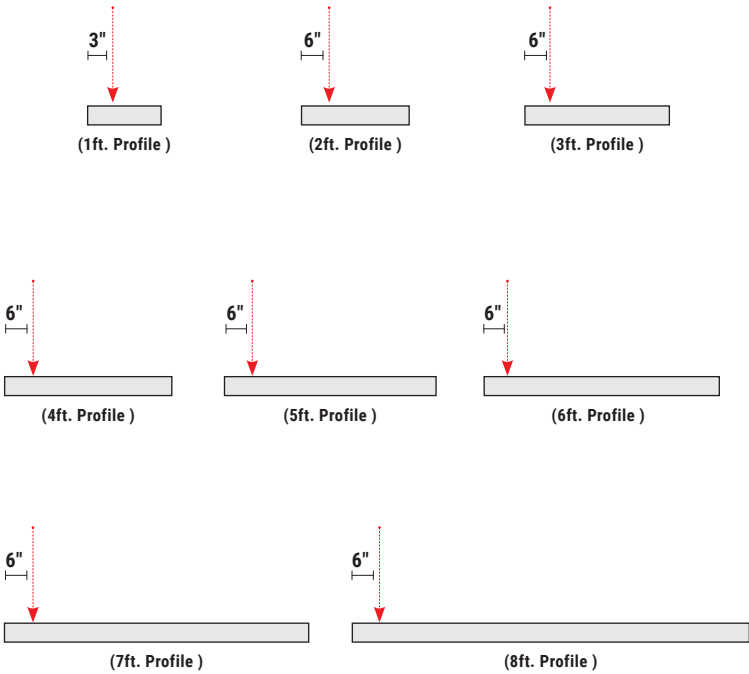
MODEL	Samsung Breakaway 44 inch
POWER CONSUMPTION	31W
LUMINOUS FLUX	Standard: 4185lm @ 3500K High: 4650lm @ 3500K
LUMINOUS EFFICACY	Standard: 135lm/W High: 150lm/W

# WIRE FEED

### APPLICATION: RECESSED, WALL MOUNT



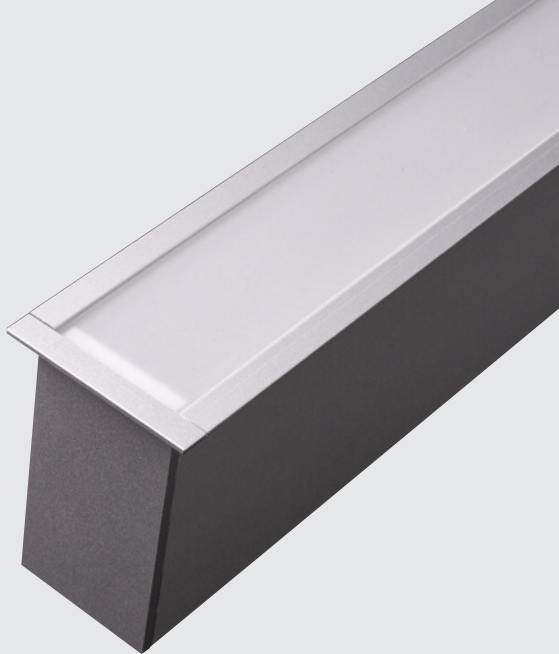
### APPLICATION: SUSPENSION





# ORDERING GUIDE

## F38



ARCHITECTURAL PROFILE - F38

### F38 1 OF 2

FAMILY	MOUNTING		EXTRUSION LENGTHS (FT.) MIN: 2' MAX: 8'		LENS		LIGHT DIRECTION	
F38	S	SUSPENSION	2	2'	OP	OPAL	DN	DOWNLIGHT
	W	WALL MOUNT	3	3'	OD	OPAL DROPPED	UD	UP & DOWNLIGHT
	R	RECESSED MOUNT	4	4'				
			5	5'				
			6	6'				
			7	7'				
			8	8'				
			CR	CONTINUOUS RUN				

### F38 2 OF 2

CCT		LUMEN PACKAGE		VOLTAGE		DIMMING		FINISHES	
27	2700K*	ST	STANDARD LUMENS	UN	120V - 277V	OS1	0-10V	01	BLACK
30	3000K	HI	HIGH LUMENS*	347	347V*	TRI	TRIAC	02	WHITE
35	3500K					TW	TUNEABLE WHITE*	AL	ALUMINUM
40	4000K*					LT	LUTRON*	CC	CUSTOMIZATION*
50	5000K*					DTW	DIM TO WARM*		
									_____

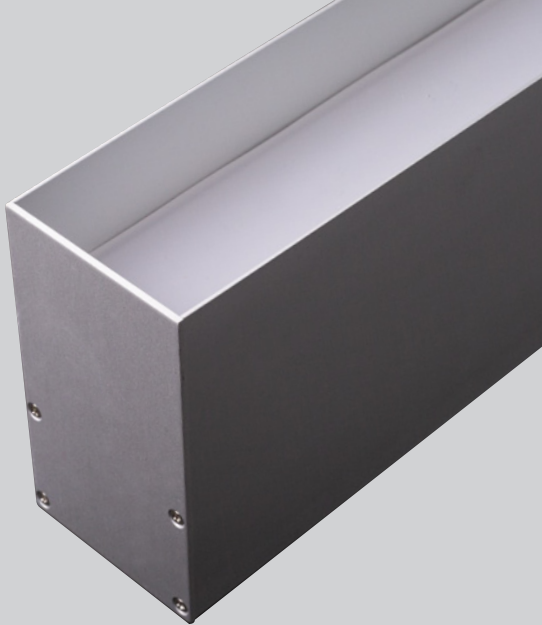
ARCHITECTURAL PROFILE SERIES:

F38



# ORDERING GUIDE

## F50



ARCHITECTURAL PROFILE - F50

### F50 1 OF 3

FAMILY	MOUNTING		EXTRUSION LENGTHS (FT.) MIN: 2' MAX: 8'		STYLE	
F50	C	SURFACE MOUNT	2	2'	RG	REGRESSED ANTI-GLARE
	S	SUSPENSION	3	3'	RA	REGRESSED ARCH
	W	WALL MOUNT	4	4'		
	R	RECESSED MOUNT	5	5'		
			6	6'		
			7	7'		
			8	8'		
			CR	CONTINUOUS RUN		

### F50 2 OF 3

LENS		LIGHT DIRECTION		CCT		LUMEN PACKAGE	
OP	OPAL	DN	DOWNLIGHT	27	2700K*	ST	STANDARD LUMENS
OD	OPAL DROPPED	UD	UP & DOWNLIGHT	30	3000K	HI	HIGH LUMENS*
				35	3500K		
				40	4000K*		
				50	5000K*		

### F50 3 OF 3

VOLTAGE		DIMMING		FINISHES	
UN	120V - 277V	OS1	0-10V	01	BLACK
347	347V*	TRI	TRIAC	02	WHITE
		TW	TUNEABLE WHITE	AL	ALUMINUM
		LT	LUTRON*	CC	CUSTOMIZATION*
		DTW	DIM TO WARM*		RAL#

ARCHITECTURAL PROFILE SERIES:

F50



# ORDERING GUIDE

## F75



ARCHITECTURAL PROFILE - F75

### F75 1 OF 2

FAMILY	MOUNTING		EXTRUSION LENGTHS (FT.)		LENS		LIGHT DIRECTION	
			MIN: 2' MAX: 8'					
F75	C	SURFACE MOUNT	2	2'	OP	OPAL	DN	DOWNLIGHT
	S	SUSPENSION MOUNT	3	3'	OD	OPAL DROPPED	UD	UP & DOWNLIGHT
	R	RECESSED MOUNT	4	4'			AL	ALL DIRECTIONAL
			5	5'				
			6	6'				
			7	7'				
			8	8'				
			CR	CONTINUOUS RUN				

### F75 2 OF 2

CCT		LUMEN PACKAGE		VOLTAGE		DIMMING		FINISHES	
27	2700K*	ST	STANDARD LUMENS	UN	120V - 277V	OS1	0-10V	01	BLACK
30	3000K	HI	HIGH LUMENS*	347	347V*	TRI	TRIAC	02	WHITE
35	3500K					TW	TUNEABLE WHITE*	AL	ALUMINUM
40	4000K*					LT	LUTRON*	CC	CUSTOMIZATION*
50	5000K*					DTW	DIM TO WARM*		RAL#

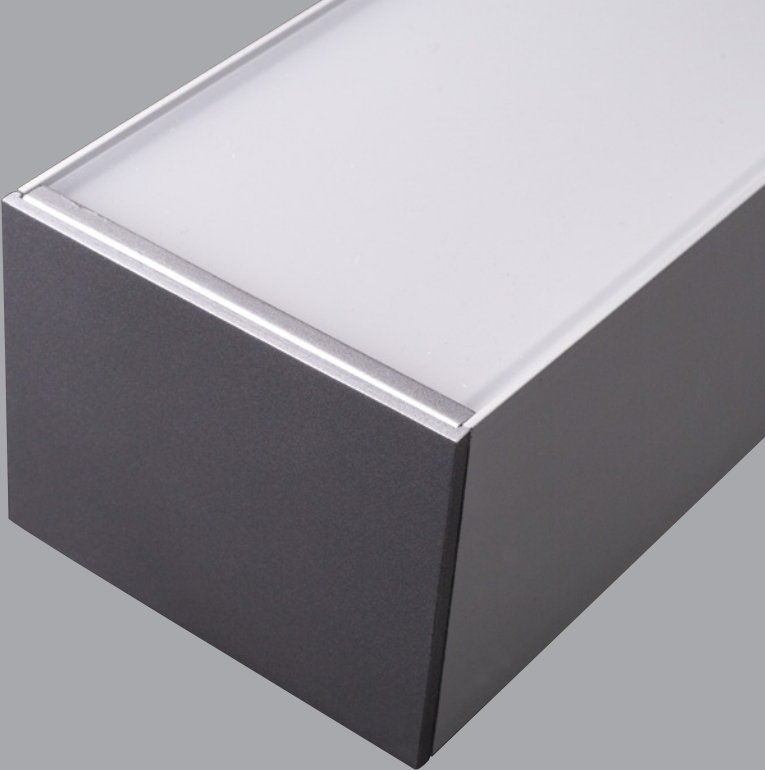
ARCHITECTURAL PROFILE SERIES:

F75



# ORDERING GUIDE

## F100



ARCHITECTURAL PROFILE - F100

### F100 1 OF 2

FAMILY	MOUNTING		EXTRUSION LENGTHS (FT.) MIN: 2' MAX: 8'		LENS		LIGHT DIRECTION	
F100	C	SURFACE MOUNT	2	2'	OP	OPAL	DN	DOWNLIGHT
	S	SUSPENSION	3	3'				
			4	4'				
			5	5'				
			6	6'				
			7	7'				
			8	8'				
			CR	CONTINUOUS RUN				

### F100 2 OF 2

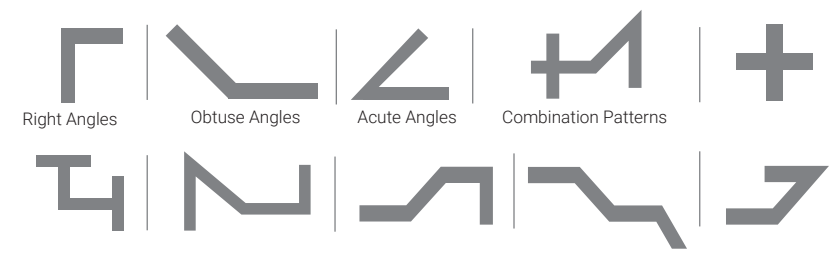
CCT		LUMEN PACKAGE		VOLTAGE		DIMMING		FINISHES	
27	2700K*	ST	STANDARD LUMENS	UN	120V - 277V	OS1	0-10V	01	BLACK
30	3000K	HI	HIGH LUMENS*	347	347V*	TRI	TRIAC	02	WHITE
35	3500K					TW	TUNEABLE WHITE*	AL	ALUMINUM
40	4000K*					LT	LUTRON*	CC	CUSTOMIZATION*
50	5000K*					DTW	DIM TO WARM*		RAL#



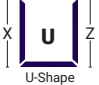
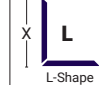


ARCHITECTURAL PROFILE SERIES:

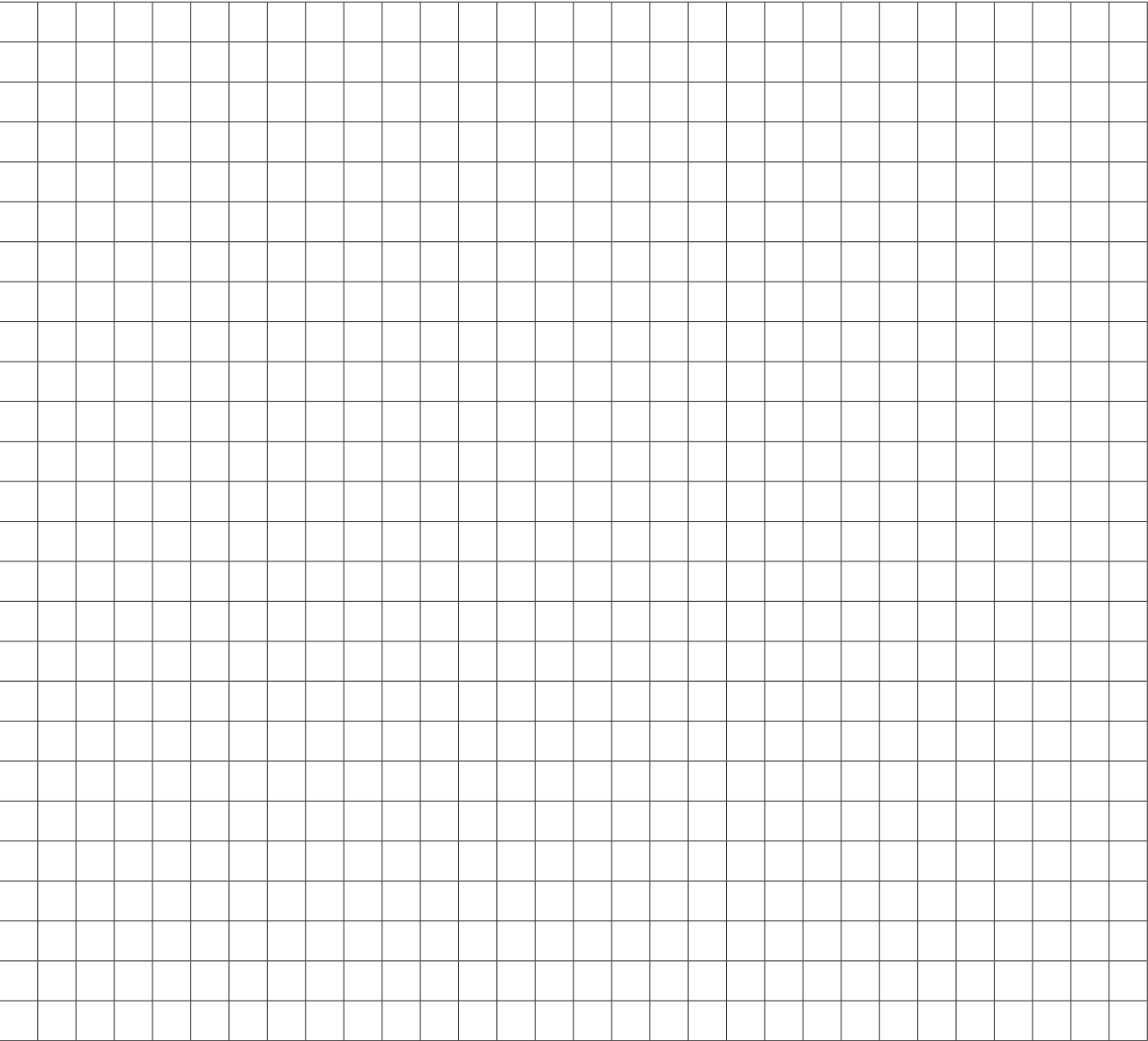
F100



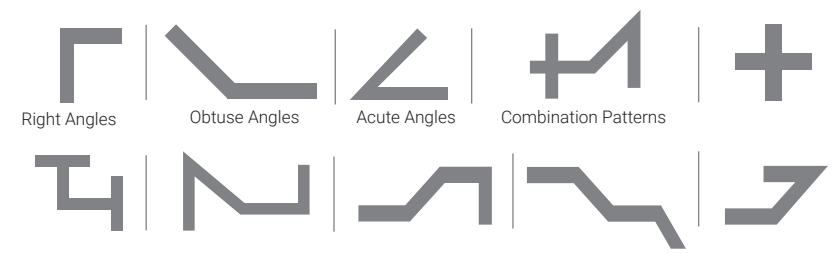
# ETCH & SKETCH




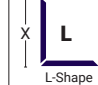




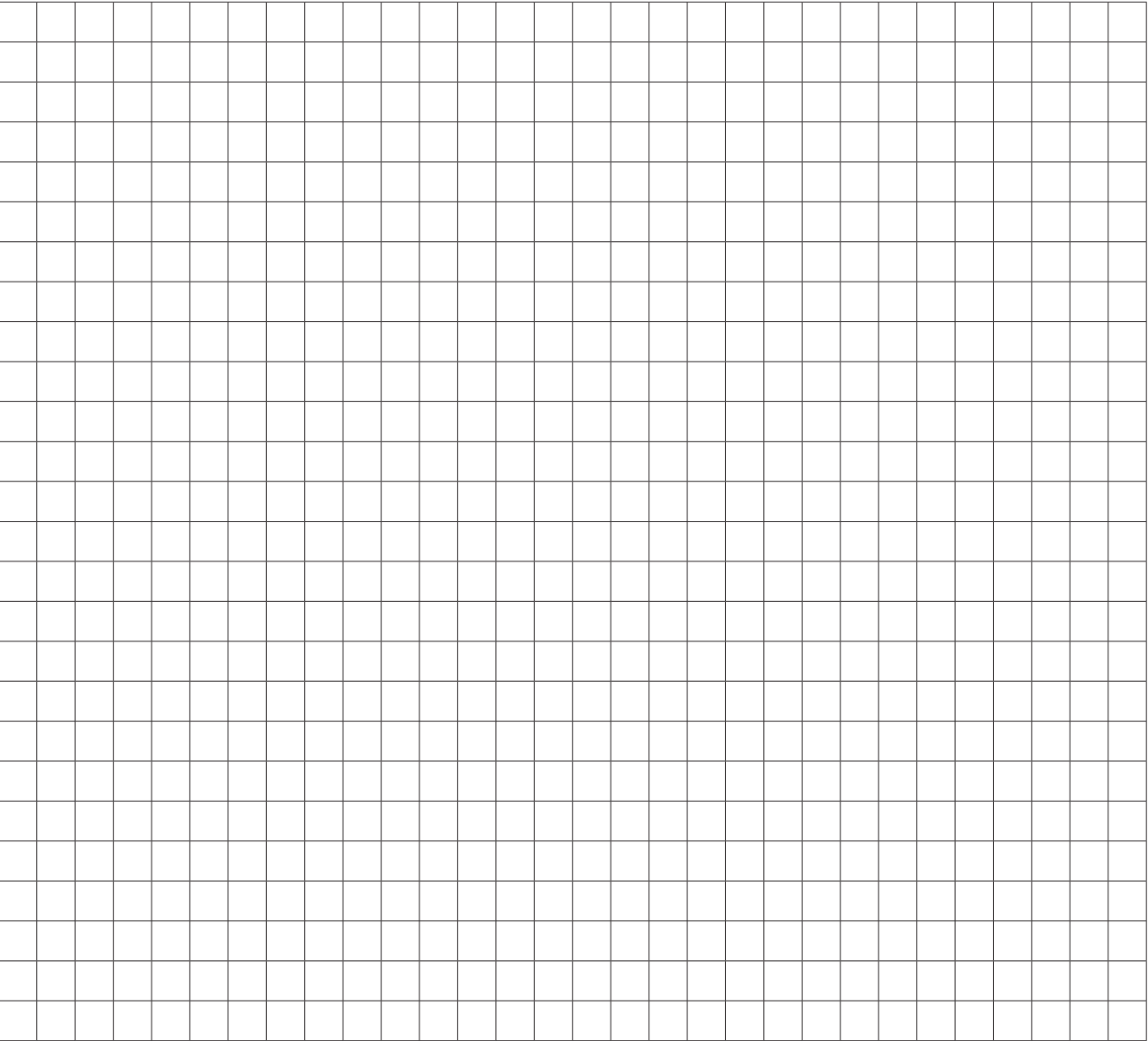
PATTERNS	
S - X	Square
R - XY	Rectangle
U - XYZ	U-Shape
L - XY	L-Shape
C	Custom Pattern
Standard Patterns Minimal Lengths	
	
	
Square	Rectangle
X = 23° min. Y = 23° min.	X = 23° min. Y = 23° min. Z = 23° min.
Custom Patterns	
	
T	X
Corner	
All corners are mitre cut and customizable to any degree.	



# ETCH & SKETCH



PATTERNS	
S - X	Square
R - XY	Rectangle
U - XYZ	U-Shape
L - XY	L-Shape
C	Custom Pattern
Standard Patterns Minimal Lengths	
	
	
Square	Rectangle
X = 23° min. Y = 23° min.	X = 23° min. Y = 23° min. Z = 23° min.
Custom Patterns	
	
T	X
Corner	
All corners are mitre cut and customizable to any degree.	





# Fase<sup>1</sup>

33 West Beaver Creek Road,  
Richmond Hill, Ontario Canada L4B 1L8

**DALLAS TRADE MART**  
Eurofase Showroom, Suite #4002

**tel** 905.695.2055  
**fax** 905.695.2056

**toll free** 1.800.660.5391  
**toll free** 1.800.660.5390



Printed in Canada  
© 2021 Eurofase Inc. All rights reserved.

Eurofase Inc. reserves the right to make alterations to the construction and design of products shown in this catalog in order to meet the laws or regulations of any authorized governing organization. The use of products shown in this catalog must comply with local building codes.