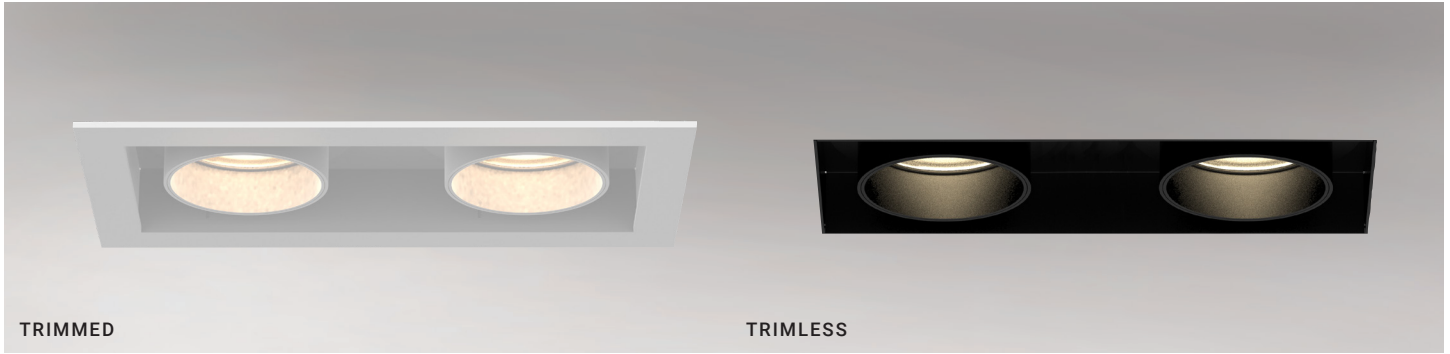


PROJECT: \_\_\_\_\_

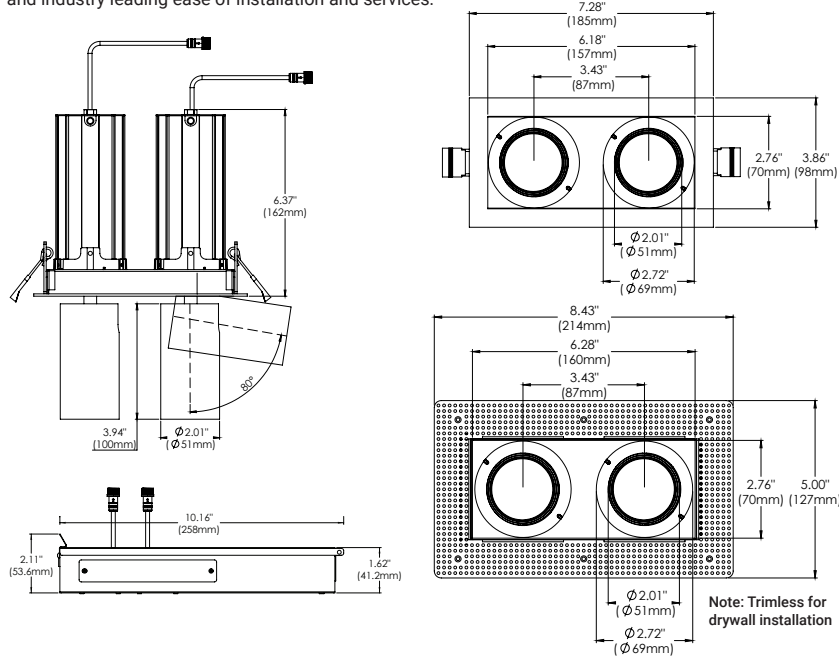
TYPE: \_\_\_\_\_ DATE: \_\_\_\_\_

NOTES: \_\_\_\_\_



### FEATURES

Tango is a specification grade LED recessed family, offering multiple options for design and functionality. Round and square, trim and trimless, 1, 2 and 3 light options and several task specific trim designs. Tango features 90+ CRI high performance LED chips, drivers with multi dimming capabilities and industry leading ease of installation and services.



**STANDARD DRIVER BOX:** MINIMUM HEIGHT CLEARANCE: 9.5"  
**MAX CEILING TRIM THICKNESS:** 1.25" **TRIMLESS THICKNESS:** 1.5"

### SPECIFICATIONS

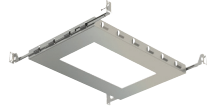
<b>FIXTURE BODY</b>	18 gauge powder coated steel body. Aluminum powder coated trim or trimless mesh plate
<b>INSTALLATION TYPE</b>	Remodel/existing ceiling N/C plate, IC Box on page 2
<b>CUT HOLE</b>	Trim & Trimless: 7" x 3 1/4"
<b>COLOR FINISH</b>	Black/White/Custom
<b>LIGHT MODULE</b>	High output, high efficiency LED COB. Lumen Maintenance: 70%@50,000 hrs
<b>INPUT VOLTAGE</b>	120V - 277V
<b>WATTAGE</b>	30W IC Rated
<b>POWER SUPPLY</b>	2 x ERP 15W, Constant Current 350mA power supplies Minimum operating temperature: -30° Enclosed in a Junction box with 12" flexible cable to mate to module connectors
<b>ADJUSTABILITY</b>	80°
<b>ROTATION</b>	355°
<b>FUNCTIONALITY</b>	Egress/Regress
<b>CRI</b>	90+
<b>DIMMING</b>	TRIAC/ELV/0-10V
<b>LUMENS</b>	2 x 15 W, 1660 Lumens
<b>CCT OPTIONS</b>	3000K/4000K
<b>REFLECTORS</b>	(W) Wide 38°
<b>DIFFUSERS</b>	(CL) Clear
<b>APPROVAL</b>	Damp
<b>ELECTRICAL APPROVAL</b>	Compliant
<b>WARRANTY</b>	

### SPECIFICATION GUIDE

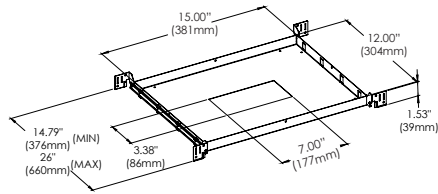
TANGO	2-LIGHT	TRIM/ TRIMLESS		FINISH	LIGHT MODULE x 2		WATTAGE		CCT	
TGO	2	T	TRIM	01	BLACK	PDPD	PULLDOWN	15	15W	30
		TL	TRIMLESS	02	WHITE					40

**ORDERING GUIDE EXAMPLE:**  
 Tango / 2-Light / Trimless / White / Pulldown / Pulldown / 15W / 3000K  
**CODE: TGO-2-TL-02-PDPD-15-30**  
 For custom module configuration, email [sales@eurofase.com](mailto:sales@eurofase.com)

### NEW CONSTRUCTION PLATES

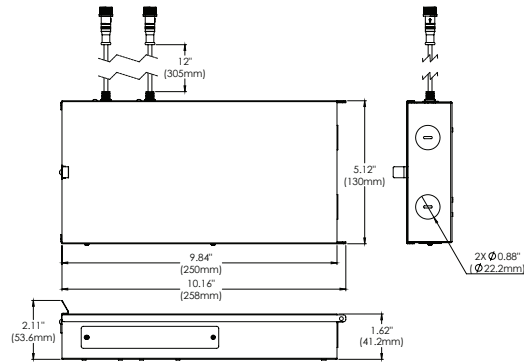


**NEW CONSTRUCTION PLATE  
TRIM & TRIMLESS**  
41949-016  
**CUT HOLE:**  
Trim & Trimless:  
7" x 3 1/4"



### DRIVERS

- Compatible with TRIAC (forward-phase or leading-edge) ELV (reverse-phase or trailing edge) and 0-10V dimmers.
- ESSxxxW models: TRIAC and ELV dimming only at 120 Vac
- ESSxxxW models: ELV dimming only at 230 Vac
- 90° C maximum case hot spot temperature
- Class 2 power supply
- Lifetime: 50,000 hours at 70° case hot spot temperature (some models have a higher lifetime)
- IP64-rated (IP66 for ESST) case with silicone-based potting
- Protections: Output open load, over-current and short-circuit (hiccup), and over-temperature with auto recovery.
- Conducted and radiated EMI: Compliant with FCC CFR Title 47 Part 15 Class B (120 Vac) and Class A (277 Vac), and EN55015 (CISPR 15) at 220, 230, and 240 Vac.
- Complies with ENERGY STAR®, DLC (DesignLight Consortium®) and CA Title 24 technical requirements
- Worldwide safety approvals



### PHOTOMETRICS

